

# Mt. ELBRUS from the North

## Ski tour 10 days Malka valley

**Program 2012: 18.05 – 27.05**

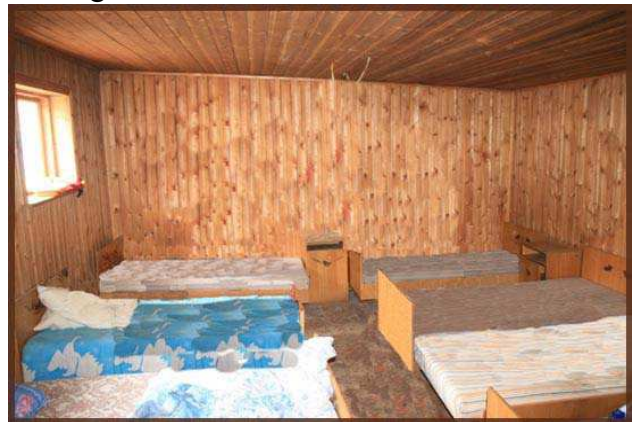


### **Day 1/18.05.2012**

Arrival Mineralnie Vody . Transfer 30km to Piatigorsk, Intourist hotel, DBL rooms.

### **Day 2/19.05.2012**

Transfer to Djilisu meadow 2300m, 100km, April-May - as close as snow condition allows (it is possible a distance of 4 to 6 km for skiing). Djilisu refuge.



*Hostel Djilisu*

**Day 3/20.05.20112**

Acclimatization ski tour to Uncle Nick Hut 3760m. Djilisu refuge.



**Day 4/21.05.2012**

Ski tour to Uncle Nick Hut 3760m. Instalation to the hut.



*Uncle Nick Hut*



**Day 5/22.05.2012**

Acclimatization ski tour along Mt.Elbrus slopes. Night in the hut.

**Day 6/23.05.2012**

Acclimatization ski tour along Mt.Elbrus slopes. Night in the hut.

**Day 7/24.05.2012**

Ski climb Mt.Elbrus West 5642m. Night in the hut.

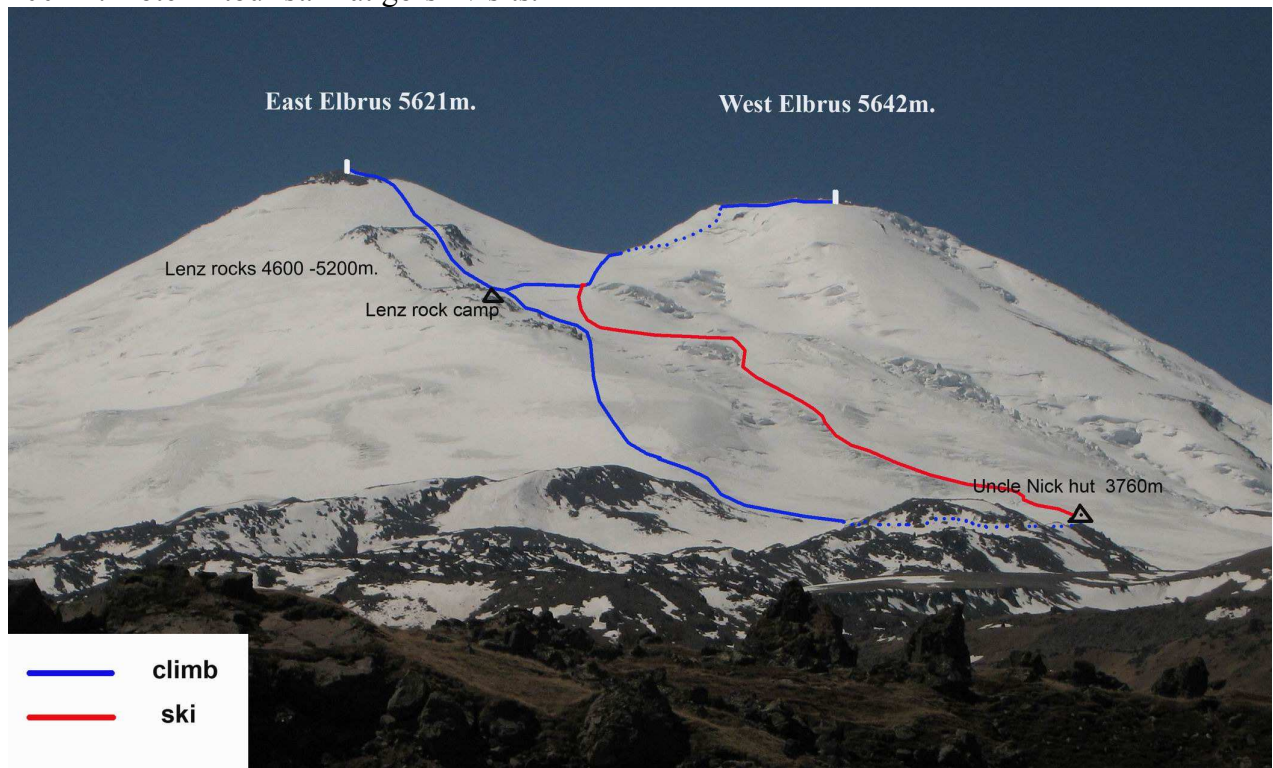
**Day 8/25.05.2012**

Reserve Day (ski tour to Astro Khitsan). Night in the hut.



**Day 9/26.05.2012**

Descent to Djilisu 2300m (it is possible a distance of 4 to 6 km to our car). Transfer to Piatigorsk, 100km. Hotel Intourist. Piatigorsk visits.



**Day 10/27.05.2012** Transfer to airport Min. Vody, departure.



**Price per person for the trip: 995€**

single room supplement: Intourist hotel 25€

**The price includes:**

- All necessary transfers required for carrying out the trip.
- Accommodation according to the program.
- Full board throughout the trip, excluding city dinner.
- NewRoute mountain guide.
- NewRoute Outdoor Cook.
- Necessary formality (visa support, passport registration, border permit).
- National Park fee

**Not included:**

- Flights to / from MinVody airport
- Unexpected preliminary evacuation cost
- Insurance
- Personal expenses, alcohol
- Visa costs

**Attention!** Last part of the car trail to Djilisu (Hathansu) till the June beginning may be covered with snow because of avalanches. The distance is normally 4 to 6 km. We have to bring our personal luggage!  
 The 10 day program may be a part of a longer trip. The first days we can be at Bezengi or Adyrsu valleys.

For visiting Russia you have to get the Russian visa. No visa can be obtained in an airport by arrival to Russia. To obtain the visa send us your passport details and we send you the invitation letter and voucher, and their copies to the Russian Consular Department.

For the invitation letter we need your following data:

Family Name, Given Name, Gender, Date of Birth (Day / Month / Year), Nationality, Passport Number, Passport Validity, Your FAX Number, Your permanent address, Address of the Russian Consulate where you would apply for the visa

The nearest Russian embassy can be found on the following web-site: <http://www.russianembassy.net>

**Marchroute Ltd.**

**5-B, Essenina str.,off.58H, St.Petersburg, 194354, Russia**

**ph/fax:+7 812 740 74 66**

[mail@newroute.ru](mailto:mail@newroute.ru) [www.newroute.ru](http://www.newroute.ru)