

# Mt. ELBRUS from the North

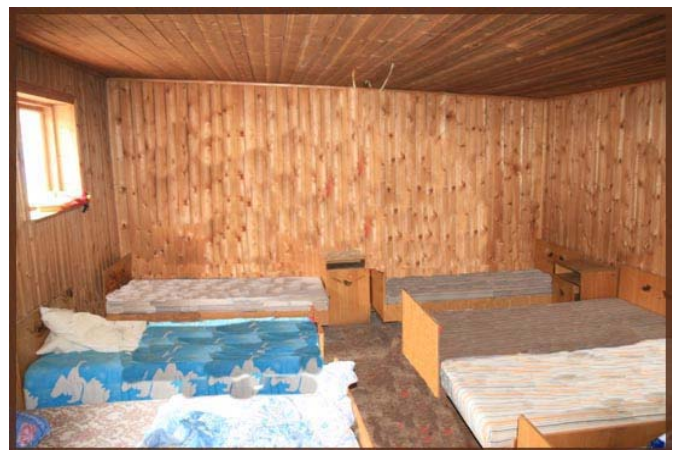
## Ski tour 12 days Malka valley

**Program: April-May-June, 2010**



**Day 1.** Arrival Mineralnie Vody . Transfer 30km to Piatigorsk, Intourist hotel, DBL rooms.

**Day 2.** Transfer to Djilisu meadow 2300m, 100km, April-May - as close as snow condition allows (it is possible a distance of 4 to 6 km for skiing). Djilisu refuge.



*Hostel Djilisu*

**Day 3.** Ski tour to peak Karakaia 3350m. Djilisu refuge.



**Day 4.** Acclimatization ski tour to Uncle Nick Hut 3760m. Djilisu refuge.

**Day 5.** Ski tour to Uncle Nick Hut 3760m. Instalation to the hut.



*Uncle Nick Hut*



**Day 6.** Acclimatization ski tour along Mt.Elbrus slopes. Night in the hut.

**Day 7.** Acclimatization ski tour along Mt.Elbrus slopes. Night in the hut.

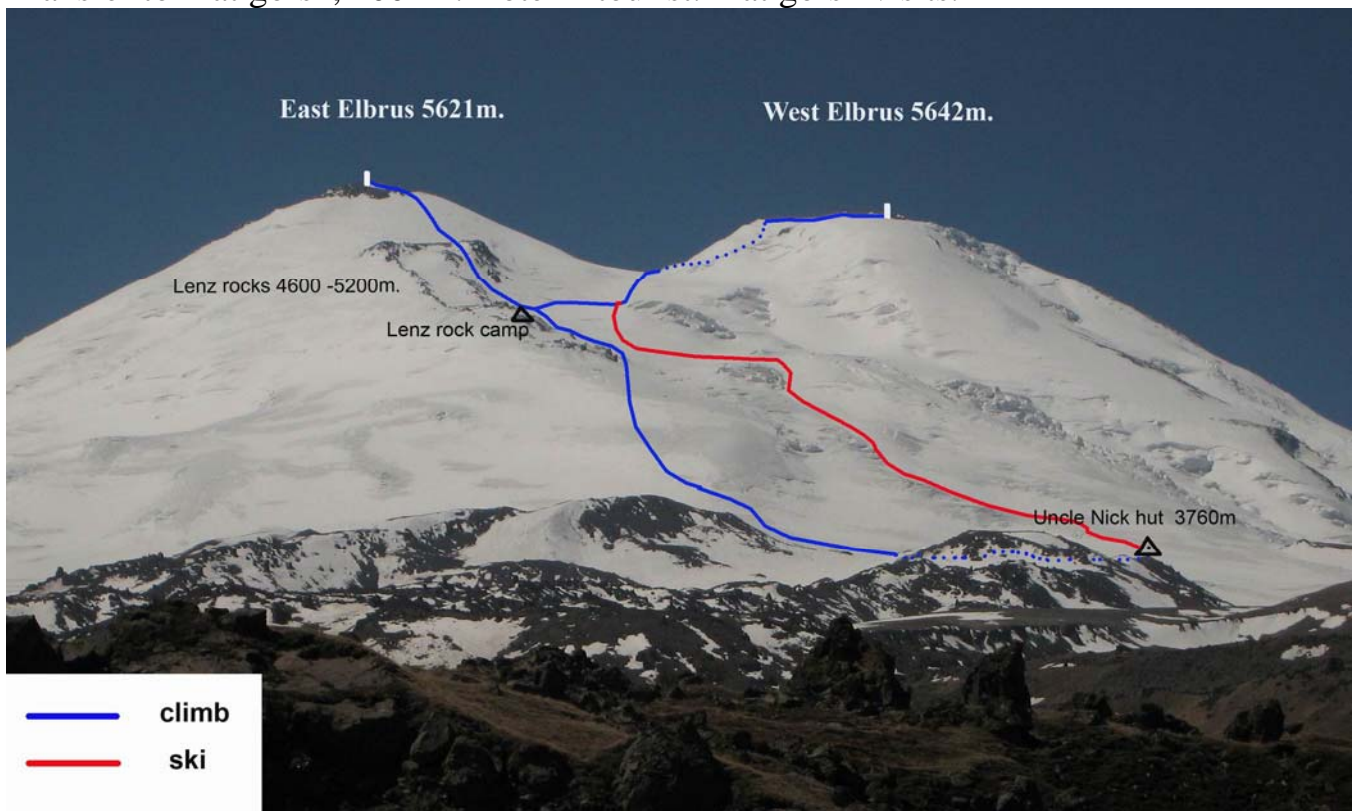
**Day 8.** Ski climb Mt.Elbrus West 5642m. Night in the hut.

**Day 9.** Ski climb Mt.Elbrus Est 5620m. Night in the hut.

**Day 10.** Reserve Day (ski tour to Astro Khitsan). Night in the hut.



**Day 11.** Descent to Djilisu 2300m (it is possible a distance of 4 to 6 km to our car). Transfer to Piatigorsk, 100km. Hotel Intourist. Piatigorsk visits.



**Day 12.** Transfer to airport Min. Vody, flight departure.



## Price is 1195€ per person for the trip

single room supplement: refuges 15€, Druzhba, Elba hotel 20€, Intourist hotel 25€

### The price includes:

All necessary transfers required for carrying out the trip.  
 Accommodation according to the program.  
 Full board throughout the trip, excluding farewell dinner.  
 NewRoute mountain guide.  
 NewRoute Outdoor Cook.  
 Necessary formality (visa support, passport registration, border permit).  
 National Park fee

### Not included:

Flights to / from MinVody airport  
 Unexpected preliminary evacuation cost  
 Insurance  
 Personal expenses, alcohol  
 Visa costs

**Attention!** Last part of the car trail to Djilisu (Hathansu) till the June beginning may be covered with snow because of avalanches. The distance is normally 4 to 6 km. We have to bring our personal luggage!

The 10 day program may be a part of a longer trip. The first days we can be at Bezengi or Adyrsu valleys.

For visiting Russia you have to get the Russian visa. No visa can be obtained in an airport by arrival to Russia. To obtain the visa send us your passport details and we send you the invitation letter and voucher, and their copies to the Russian Consular Department.

For the invitation letter we need your following data:

Family Name, Given Name, Gender, Date of Birth (Day / Month / Year), Nationality, Passport Number, Passport Validity, Your FAX Number, Your permanent address, Address of the Russian Consulate where you would apply for the visa

The nearest Russian embassy can be found on the following web-site: <http://www.russianembassy.net>

---

### Marchroute Ltd.

5-B, Essenina str., off.58H, St.Petersburg, 194354, Russia

ph. +7 812 331 64 76, ph/fax:+7 812 597 08 08

[mail@newroute.ru](mailto:mail@newroute.ru) [www.newroute.ru](http://www.newroute.ru)