

Mt. Elbrus 5642m

Climb 8 days Adyrsu, Baksan valleys

Program: 2010 April-May-June-July-August-September



Day1. Flight to Min Vody, arrival. Transfer to Terskol, Baidaevo. Hotel Elba installation. DBL room.



Hotel Elba



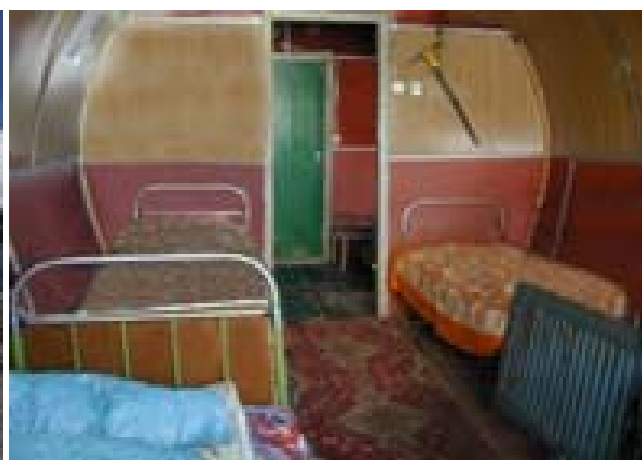
Day 2. Transfer to Cheget 2200m chair-lift to 3050m. Climb to peak Cheget 3600m. Dscent to Elba hotel.

Day 3. Transfer to Azau station 2440m, Lift to Mir station 3500m. Akklimatisation hike to Priut 11 (4050m). Descent to Elba hotel.

Day 4. Transfer to Azau station 2440m, Lift to Barrels Hut 3708m.



Barrels



Day 5. Akklimatisation to Pastukov rocks 4600-5000m. Burrels hut.



Day 6. Summit day Mt.Elbrus 5642m. (Option: Using Snowcat to Pastukov rocks ab. 4650). Barrels hut.



Day 7. Spare day for Summit. Descent to Baksan Valley. Elba hotel. (Option: Transfer to Piatyorsk city, Intourist hotel installation. City visits)

Day 8. Transfer to airport Min. Vody. Departure flight



Price is 845€ per person for the trip

single room supplement: refuges 15€, Druzhba, Elba hotel 20€, Intourist hotel 25€

The price includes:

- All necessary transfers required for carrying out the trip.
- Accommodation according to the program.
- Full board throughout the trip, excluding farewell dinner.
- NewRoute mountain guide.
- NewRoute Outdoor Cook.
- Necessary formality (visa support, passport registration, border permit).
- National Park fee

Not included:

- Flights to / from MinVody airport
- Unexpected preliminary evacuation cost
- Insurance
- Personal expenses, alcohol
- Visa costs

Attention! Last part of the car trail to Djilisu (Hathansu) till the June beginning may be covered with snow because of avalanches. The distance is normally 4 to 6 km. We have to bring our personal luggage! The 12 day program may be a part of a longer trip. The first days we can be at Bezengi or Adyrsu valleys.

For visiting Russia you have to get the Russian visa. No visa can be obtained in an airport by arrival to Russia.

To obtain the visa send us your passport details and we send you the invitation letter and voucher, and their copies to the Russian Consular Department.

For the invitation letter we need your following data:

Family Name, Given Name, Gender, Date of Birth (Day / Month / Year), Nationality, Passport Number, Passport Validity, Your FAX Number, Your permanent address, Address of the Russian Consulate where you would apply for the visa

The nearest Russian embassy can be found on the following web-site: <http://www.russianembassy.net>

Marchroute Ltd.

5-B, Essenina str., off.58H, St.Petersburg, 194354, Russia

ph. +7 812 331 64 76, ph/fax:+7 812 597 08 08

mail@newroute.ru www.newroute.ru