

Mt. ELBRUS 5642m

Climb 8 days Baksan valley

Program 2010: 19.06.-26.06.; 10.07.-17.07.; 31.07.-07.08.; 28.08.-04.09.

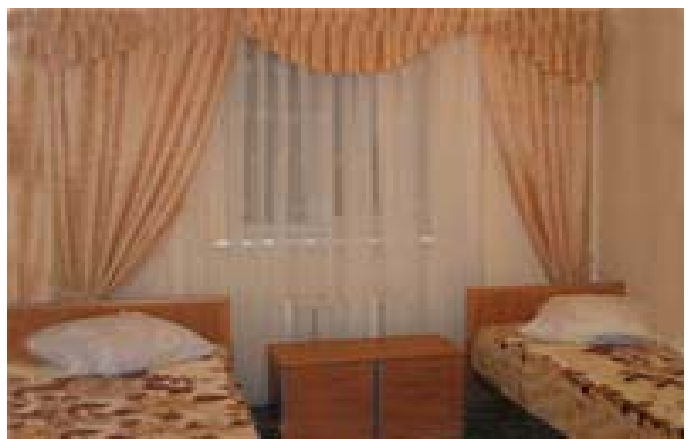


Mt.Elbrus from the South

Day1. Flight to Min Vody, arrival 11h30. Transfer to Terskol, Baidaevo. Hotel Elba installation. DBL room.



Elba hotel



Day 2. Transfer to Cheget 2200m chair-lift to 3050m. Climb to peak Cheget 3600m. Dscent to Elba hotel.

Day 3. Transfer to Azau station 2440m, Lift to Mir station 3500m. Akklimatisation hike to Priut 11 (4050m). Descent to Elba hotel.

Day 4. Transfer to Azau station 2440m, Lift to Barrels Hut 3708m.



Barrels hut



Day 5. Akklimatisation to Pastukov rocks 4600-5000m. Burrels hut.



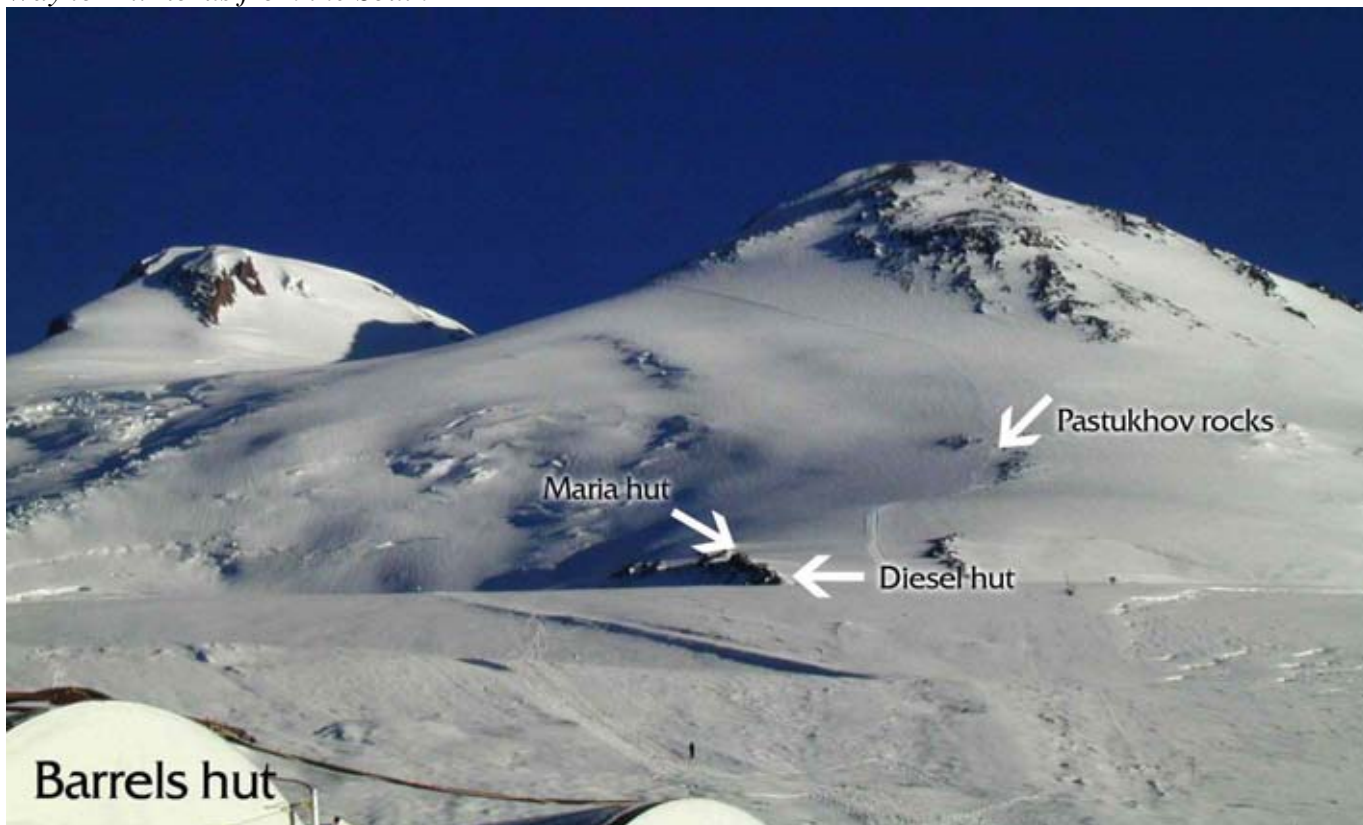
Day 6. Summit day Mt.Elbrus 5642m. (Option: Using Snowcat to Pastukov rocks ab. 4650). Barrels hut.



View from Elbrus slope



Way to Mt.Elbrus from the South



Day 7. Spare day for Summit. Descent to Baksan Valley. Elba hotel. (Option: Transfer to Piatygorsk city, Intourist hotel installation. City visits)

Day 8. Transfer to airport Min. Vody. Departure flight 12h40.



View from Intourist hotel



Map of the Caucasus

Price is 900€ per person for the trip

single room supplement: refugees 15€, Elba hotel 20€, Intourist hotel 25€

The price includes:

- All necessary transfer required for carrying out the trip.
- Accommodation according to the program.
- Full board throughout the trip, excluding farewell dinner.
- NewRoute mountain guide.
- NewRoute Outdoor Cook.
- Necessary formality (visa support, passport registration, border permit).
- National Park fee

Not included:

- Flights to / from MinVody airport
- Unexpected preliminary evacuation cost
- Insurance
- Personal expenses, alcohol
- Visa costs

For visiting Russia you have to get the Russian visa. No visa can be obtained in an airport by arrival to Russia.

To obtain the visa send us your passport details and we send you the invitation letter and voucher, and their copies to the Russian Consular Department.

For the invitation letter we need your following data:

Family Name, Given Name, Gender, Date of Birth (Day / Month / Year), Nationality, Passport Number, Passport Validity, Your FAX Number, Your permanent address, Address of the Russian Consulate where you would apply for the visa

The nearest Russian embassy can be found on the following web-site: <http://www.russianembassy.net>

Marchroute Ltd.

5-B, Essenina str., off.58H, St.Petersburg, 194354, Russia

ph. +7 812 331 64 76, ph/fax:+7 812 597 08 08

mail@newroute.ru www.newroute.ru